

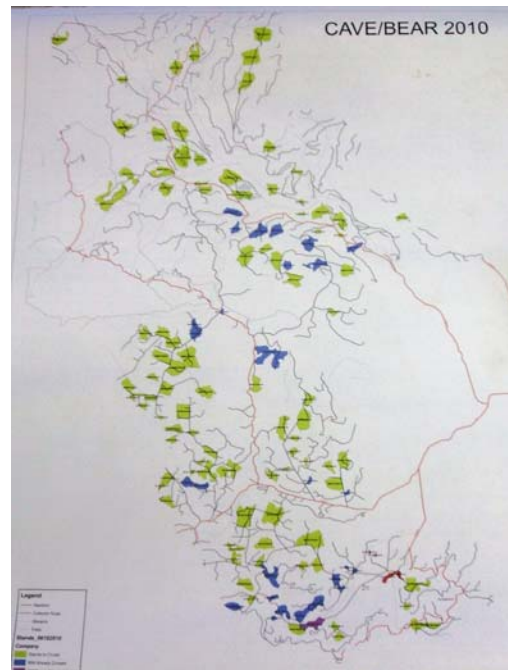
Mt. Adams Resource Stewards, the Mt. Adams District Collaborative Group and the Cave-Bear Creek Planning Area of the Gifford Pinchot National Forest

Mt. Adams Resource Stewards (MARS), on behalf of the Mt. Adams District Collaborative Group, is administering a stand exam contract on the Cave-Bear Creek Planning Area of the Mt. Adams Ranger District west of Trout Lake. The project is the outcome of discussions between the Collaborative Group and US Forest Service regarding ways by which the Collaborative Group can support the USFS in expediting stewardship contracting opportunities on the Gifford Pinchot N.F (GPNF). In recent years, budget restrictions and staff size have limited the GPNF to allocate staff to one major project at a time, and resources have most recently been focused on a project in the Mt. St. Helens area. It was suggested that the Collaborative Group could assist the USFS by advancing the process for the next priority area under the Mt. Adams Ranger District five year plan. MARS values the project for its potential to advance forest restoration treatments across the federal forest landscape, while creating economic opportunity for local businesses and generating material for the region's forest products sector.

Stand exams are a fairly in depth assessment of the state of forest stands across a given area, necessary for USFS silviculturists and planners to determine what, where and how they will treat stands to achieve desired outcomes. MARS and the Collaborative Group received funding through the South Gifford Pinchot Resource Advisory Committee to hire private contractors to conduct stand exams on the Cave-Bear Creek Planning Area, with the goal of advancing the project planning and development process.

During the 2009 and 2010 field seasons, MARS is administering contracts with Integrated Resource Management of Philomath, OR and Kiona Forestry of Snowden, WA to collect information on common stand measures, such as tree heights and diameters, live crown ratios, stand basal area, radial growth, and insect and disease activity. This will "jump start" the project development process for the USFS, allowing them to begin aspects of project development during 2010 and 2011 that would have otherwise been delayed.

Currently, MARS is working with contractors to assess even-age plantation stands that range from 45 to 80 years in age, primarily for commercial thinning potential. Some natural stands will be included as the project develops. Approximately 1,000 acres of plantations were assessed during the fall of 2009, and the goal is to have completed stand exams on a total of 8,000 acres by late 2010.



Map indicating layout of 45-80 year old stands being examined by MARS and contractors for Cave-Bear assessment.